



Image depicts items not supplied by Metricon namely landscaping and fencing.

# LOMAN

LOT: 63

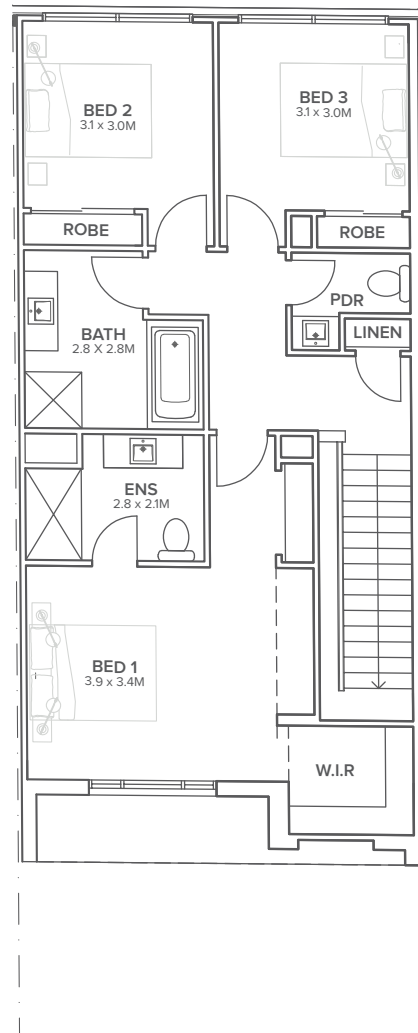
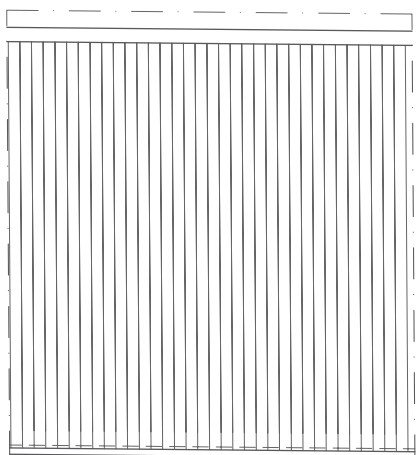
LOT SIZE: 201m<sup>2</sup>

HOME SIZE: 210m<sup>2</sup>

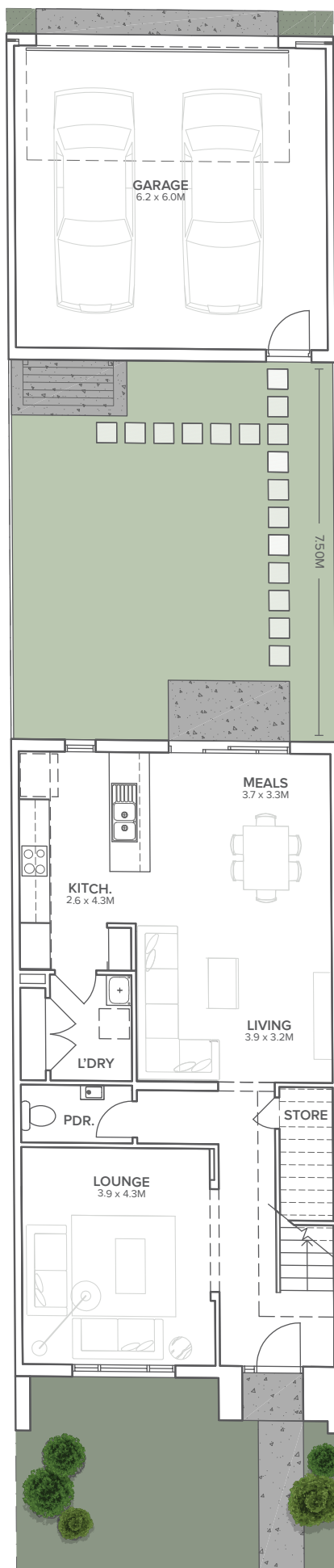
2  2.5  3 

The Loman boasts 2 living spaces with ample living and dining areas, and three great bedrooms including the to-die-for master suite. This is a substantial terrace-style home with a striking streetscape that will reward those who demand the best. It features a low maintenance courtyard with a rear access double garage.

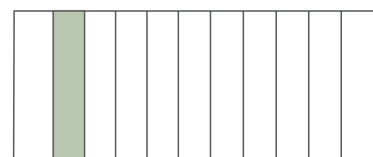
# 1095 GLASSCOCKS ROAD NARRE WARREN SOUTH



FIRST FLOOR



GROUND FLOOR



SITE PLAN

Disclaimer: The information contained herein is accurate as of 5 May 2021 but may be subject to change without notice. All areas and dimensions are subject to survey and change. The particulars contained in this brochure are supplied for information purposes only and the vendor and/or its agents accept no responsibility for the accuracy, adequacy or completeness of any information presented. The appropriate authorities should be consulted for information concerning any services which may be contained within any lot and any building restrictions which may apply. Photographs and artists impressions are for illustrative purposes only. Purchasers must carefully review the information within the contract of sale prior to purchase.