



Image depicts items not supplied by Metricon namely landscaping and fencing.

# MEZZO

LOT: 93

LOT SIZE: 138m<sup>2</sup>

HOME SIZE: 220m<sup>2</sup>

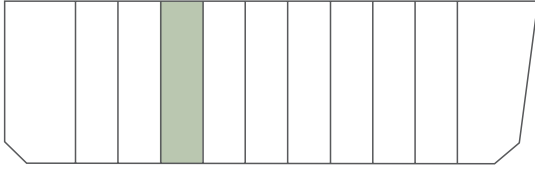
2  2.5  3 

Looking for a home that's low maintenance but with maximum space? Introducing the Mezzo. This unique design delivers innovative reverse living at its finest. Featuring two spacious bedrooms nestled on the ground floor with a private courtyard for those indoor plant enthusiasts. Upstairs you will then find a private master retreat with its own ensuite and walk-in robe. Perfect for entertaining on those summer nights, the heart of the home has a superb open plan living area with a spacious balcony that enjoys uninterrupted views of Silverwell's parkland to the Berwick Springs wetlands beyond.

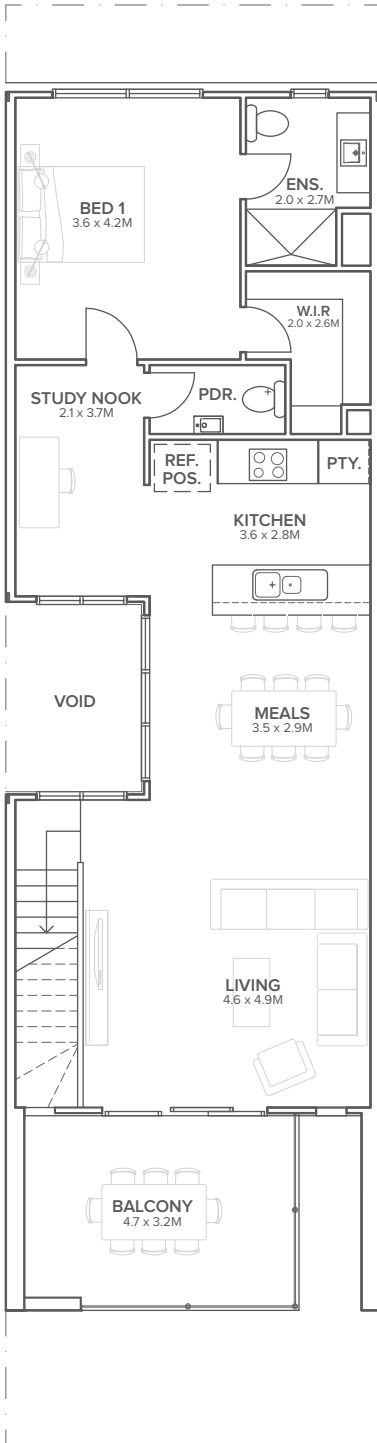
MYSILVERWELL.COM.AU | 1300 358 314

SILVERWELL  
SILVERWELL

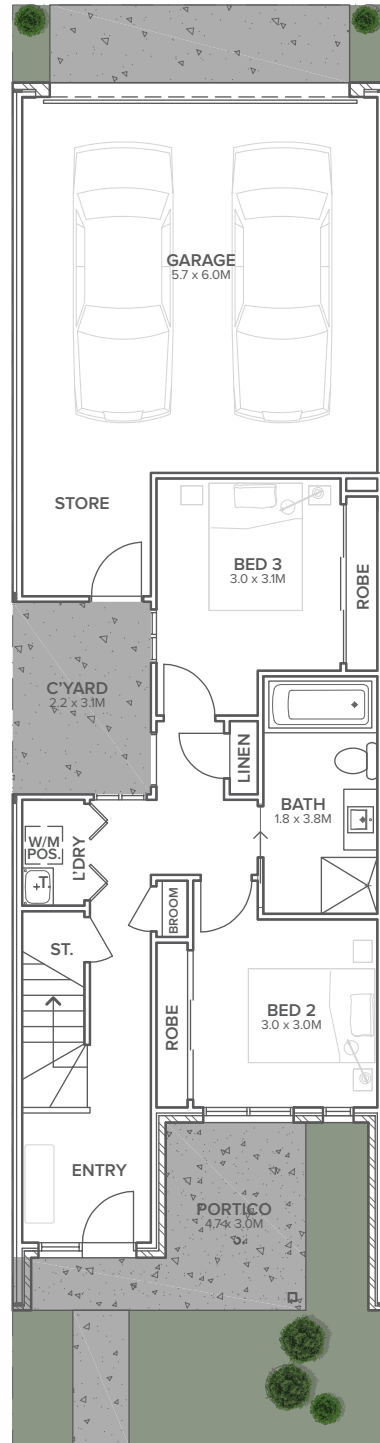
# 1095 GLASSCOCKS ROAD NARRE WARREN SOUTH



SITE PLAN



FIRST FLOOR



GROUND FLOOR

Disclaimer: The information contained herein is accurate as of 2 June 2021 but may be subject to change without notice. All areas and dimensions are subject to survey and change. The particulars contained in this brochure are supplied for information purposes only and the vendor and/or its agents accept no responsibility for the accuracy, adequacy or completeness of any information presented. The appropriate authorities should be consulted for information concerning any services which may be contained within any lot and any building restrictions which may apply. Photographs and artists impressions are for illustrative purposes only. Purchasers must carefully review the information within the contract of sale prior to purchase.